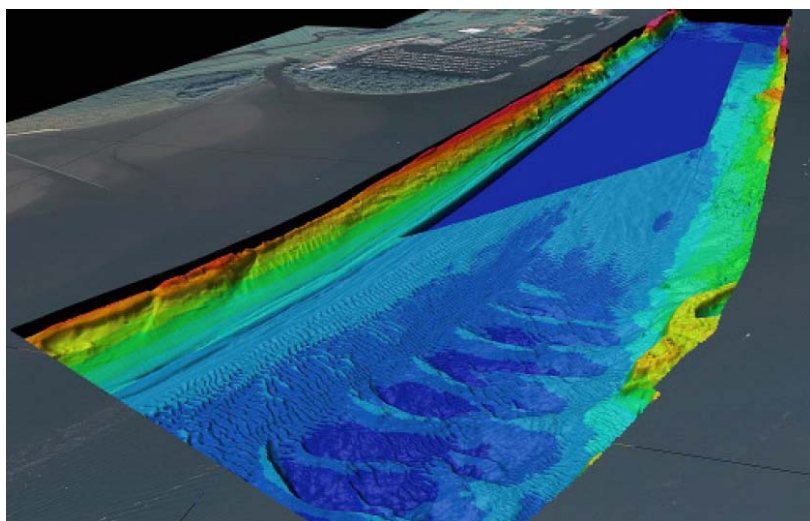
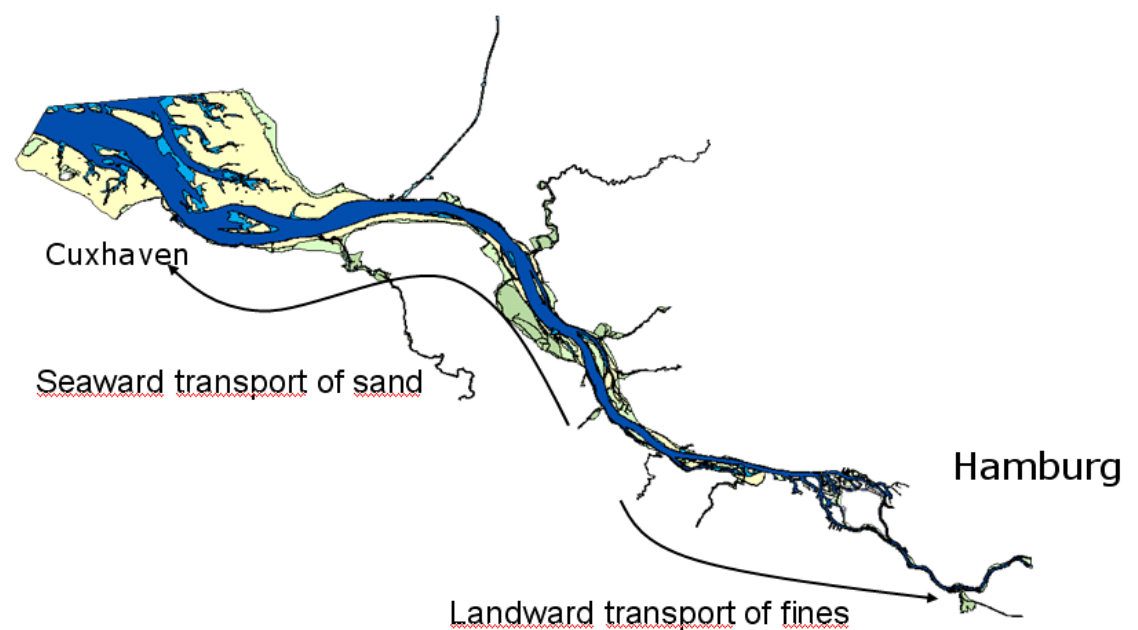


Sediment management of the Elbe-estuary

Sediment fluxes are out of balance: a net flux of sands towards the sea increases the tidal volume; a net flux of fines towards the Hamburg harbour due to tidal pumping causes high rates of siltation.

Shortrange deposition of dredged material induces the formation of cycles of sediment, resulting in a linear increase of the maintenance efforts at the region of concern. The new sediment management concept aims at the compensation of net sediment fluxes by long-range deposition.



A Sediment trap has been constructed to catch fines before entering the harbour basins.

