

Wir machen Schifffahrt möglich.



WSV.de

Wasser- und
Schifffahrtsverwaltung
des Bundes

Guidance for operators of pleasure craft

Kiel Canal



Dear pleasure craft operators,

You want to navigate the Kiel Canal with as few problems as possible, safely and in close contact with professional shipping. You are therefore requested to observe the very important points listed here.

Traffic on the Kiel Canal is governed by the Traffic Regulations for Navigable Maritime Waterways with the associated notices issued by the Northern Region Office of the Federal Waterways and Shipping Agency.

Pleasure craft (vessels operated non-commercially and used exclusively for sporting and recreational purposes) may use the Kiel Canal and its approaches for passage and without pilots only during daylight hours and not when visibility is reduced.

Pleasure craft must organize their navigation of the canal such that they can reach a berth intended for use by pleasure craft before the end of daylight hours. This does not apply to craft making for the approved berths in Kiel-Holtenau lock approach and Brunsbüttel inland port or to craft locking out to the Elbe after notifying the lock master.

The appropriate VHF channels must be listened to. Radio discipline is essential.

VHF channel 13 (call Kiel Canal I)	Brunsbüttel lock area
VHF channel 2 (call Kiel Canal II)	Brunsbüttel – Breiholz reach
VHF channel 3 (call Kiel Canal III)	Breiholz – Kiel-Holtenau reach
VHF channel 12 (call Kiel Canal IV)	Kiel-Holtenau lock area



Behaviour in the lock approaches and locks

Watch out for backwash when passing moored vessels. Smoking and naked flames are prohibited in the lock area. Listen for public address announcements.

Keep to the right



On the Kiel Canal, you must keep as far to the right as possible. On certain sections, the minimum distance to be kept from the bank is indicated by signs. Because of the sloping embankments, the indicated minimum distance from the bank must be kept.

Maximum speed

The maximum speed of 15 km/h over the ground must not be exceeded.

Ferry crossings and professional shipping



Particular attention must be paid when passing ferry crossings (cross current) and oncoming ships because of the suction.

Sailing on the Kiel Canal

Sailing is prohibited on the Kiel Canal.

This does not apply:

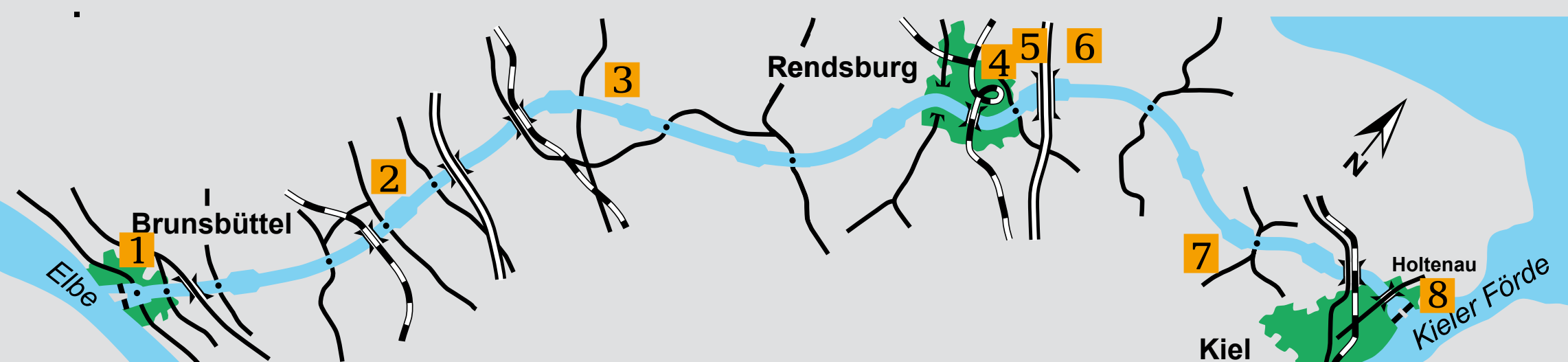
- in the approach to the Old Locks in Kiel-Holtenau;
- outside the navigation channel on Lakes Borgstedt, Audorf and Flemhude.

Powered pleasure craft may additionally set sails. They must then display a black cone – point down – forward. Water skiing, jetbiking and windsurfing are prohibited on the Kiel Canal. A powered pleasure craft may only tow one pleasure craft, and the length of the towed pleasure craft must not exceed 15 metres. The minimum speed of the towed convoy must be 9 kilometres (4.9 nautical miles) per hour.

Behaviour in fog

If restricted visibility is suddenly encountered, pleasure craft may moor at a suitable site on the stretch of canal if they would endanger the safety of traffic by continuing to the next siding (passing bay). In the sidings, vessels must moor behind the dolphins on the dolphins' mooring rings.



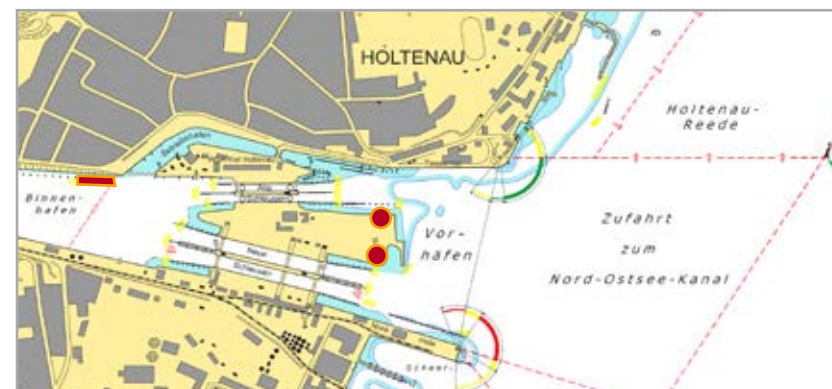


Pleasure craft may only moor at the following berths:

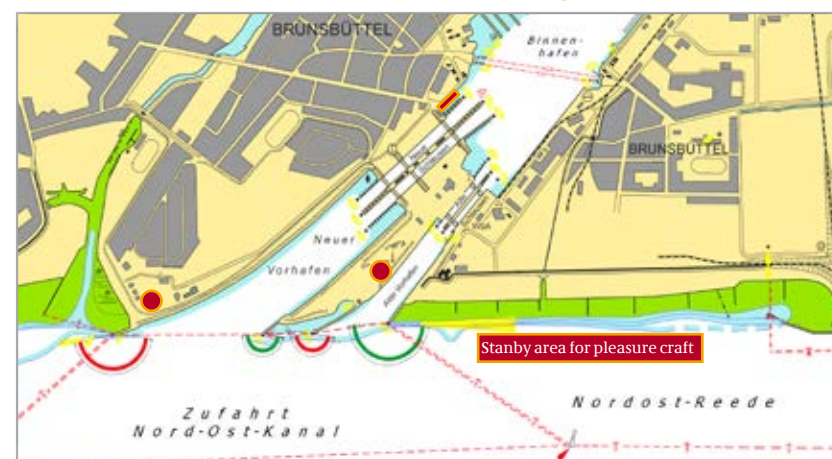
- 1 Brunsbüttel pleasure craft berth (north side, km 1.8, behind the fender piles)
- 2 Berth in the turning area of Dückerswisch siding – north side (km 20.7), max. draught 2.40 m
- 3 Berth before Gieselau lock– (entrance at km 40.5), max. draught 2.40 m
- 4 Berths in Lake Obereider with narrows (entrance at km 66)
- 5 Berth in Lake Borgstedt (entrance at km 67.5)
- 6 Berths in Lake Borgstedt (entrance at km 70)
- 7 Pleasure craft roadstead in Lake Flemhude (entrance at km 85.4)
- 8 Kiel-Holtenau (km 98.5), east of the lock

Note on nos 2, 3 and 7: berths may be used for one night only

	Gieselau Canal	Achterwehr Canal (Strohbrück lock closed)
Length overall	65,00 m	35,00 m
Maximum width	9,00 m	7,50 m
Draught	2,40 m	
Middle section, Lake Borgstedt Height – 22.50 m above water level		





Standby area for pleasure craft Approaches zone signal







Standby area for pleasure craft Approaches zone signal

Light signals

Entering the approaches to the Kiel Canal, the lock approaches and locks			
Signal		Meaning	Where can it be seen?
One occulting white light		Entry permitted into the approach	On the signals masts on the lock islands (jetty 4 in Brunsbüttel)
One occulting white light		Entry permitted into the lock approaches and locks	On the signal masts on the central wall of the lock
Waiting area:	Brunsbüttel – east of the approach boundary Kiel-Holtenau – north of the approach boundary		

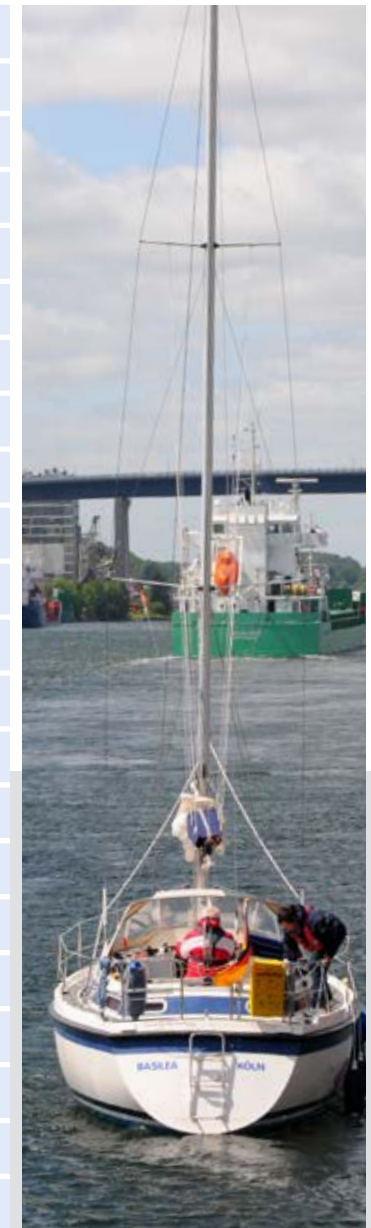
Passing through the siding areas on the Kiel Canal

Signal		Meaning	Where can it be seen?
One quick flashing red light		No entry into the siding area	On the signal masts at the entrances to the sidings
Three occulting red lights positioned above each other		No exit from the sidings for all vessels	On the signal masts in the sidings
Two isophase white lights		No exit from the sidings for category 1 and 2 vessels with a speed of less than 15 km/h	On the last (in the direction of travel) signal mast in the siding
Two fixed red lights positioned side by side		All vessels are prohibited from proceeding in Brunsbüttel inland port	On the signal masts of the oil terminal located on the north side

Daylight navigation hours (CET)

Add one hour during CEST

01.Jan. to 15.Jan.	07.30 to 17.00 hrs
16.Jan. to 31.Jan.	07.30 to 17.30 hrs
01.Feb. to 15.Feb.	07.00 to 18.00 hrs
16.Feb. to 28./29.Feb.	06.30 to 18.30 hrs
01.Mar. to 15.Mar.	05.30 to 19.00 hrs
16.Mar. to 31.Mar.	05.00 to 19.30 hrs
01.Apr. to 5.Apr.	04.30 to 20.00 hrs
16.Apr. to 30.Apr.	04.00 to 20.30 hrs
01.May. to 15.May.	03.30 to 21.00 hrs
16.May. to 31.May.	03.00 to 21.30 hrs
01.Jun. to 30.Jun.	02.30 to 22.00 hrs
01.Jul. to 15.Jul.	02.30 to 22.00 hrs
16.Jul. to 31.Jul.	03.00 to 21.30 hrs
01.Aug. to 15.Aug.	03.30 to 21.00 hrs
16.Aug. to 31.Aug.	04.00 to 20.30 hrs
01.Sep. to 15.Sep.	04.30 to 20.00 hrs
16.Sep. to 30.Sep.	05.00 to 19.30 hrs
01.Oct. to 15.Oct.	05.30 to 19.00 hrs
16.Oct. to 31.Oct.	06.00 to 18.30 hrs
01.Nov. to 5.Nov.	06.30 to 17.30 hrs
16.Nov. to 30.Nov.	07.00 to 17.00 hrs
01.Dec. to 31.Dec.	07.30 to 17.00 hrs



Canal dues

All pleasure craft transiting the Kiel Canal in a westerly or easterly direction must pay the canal dues at the pay stations at the Old Lock or at the newspaper stand at the New Lock in Kiel-Holtenau.

All pleasure craft that are only using a section of the Kiel Canal must pay the dues at the entrance or exit lock. In Brunsbüttel, they must moor at the pleasure craft berth (km 1.8) for this purpose.

Pleasure craft that have their permanent berth on the Kiel Canal between the locks and wish to navigate there require a permit issued by the competent waterways and shipping office.

Note:

In addition to the familiar channels of communication, such as VHF Kiel Canal 4 and the lock signals, you can now also contact the Kiel lock master directly by dialling 0431-3603-152.



Further information

Pleasure craft with a length of 20 m or more must operate a class A or B AIS transponder during their passage through the canal. AIS transponders can be rented for passage through the canal at the entrance locks if necessary.

Pleasure craft with a draught exceeding 3.1 m are subject to mandatory pilotage. Multi-hulled vessels used for recreational purposes are exempt from the mandatory pilotage requirement up to a total width of 12.0 m and a total length of 20.0 m.

It is prohibited to berth and moor pleasure craft:

- at barrages, river control structures, fender piles, gauges, and fixed and floating aids to navigation;
- in the approach to the Old Lock in Brunsbüttel and at the dolphins in Kiel-Holtenau;
- on the embankments in the Kiel Canal and the Gieselau Canal;
- at the installations used by vessels belonging to the Federal Waterways and Shipping Administration. Nor may vessels be launched or placed in the water using these installations.

2014 – Latest news – Kiel-Holtenau lock

Because of the closure of the Small Lock for construction work, all pleasure craft will be locked through the Large Chambers together with professional shipping.

You can pay on the Large Lock at the newspaper stand and at a pay station. Both options are located in the building of the lock control platform.

Information can be obtained on the Internet at <http://www.wsa-kiel.wsv.de>

or by calling the enquiry helpline:
0431 3603 152.



Kiel-Holtenau Waterways and Shipping Office

Schleuseninsel 2

24159 Kiel

Phone 0431 3603-0

Fax 0431 3603-414

wsa-kiel-holtenau@wsv.bund.de

www.wsa-kiel.wsv.de

As at July 2014

This brochure is part of the public relations work of the Federal Waterways and Shipping Administration and is issued free of charge. It must not be used for the purpose of canvassing.

